

How to Set Up Brandi Music™ on a Sonos Era 100 Speaker Using Alexa

Stream licensed business music from Brandi Music™ (from Easy On Hold®) on your Sonos Era 100 with Amazon Alexa.

What You Need



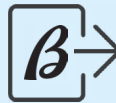
SONOS Era 100



Wi-Fi Network



Amazon Account



EOH/Brandi Login



SONOS app



Alexa app



My Brandi Music Skill

Step 1: Set Up Your Sonos Era 100 Speaker

1. Plug in your Sonos Era 100
2. Open the Sonos App
3. Tap Settings → System → Add Product
4. Follow the prompts to connect to Wi-Fi
5. Assign a room name (e.g., Lobby, Office)

TIP: For business audio, do not use the Stereo Pair setting unless intentionally configuring left/right speakers.

Step 2: Enable Alexa on Sonos

In the Sonos app:

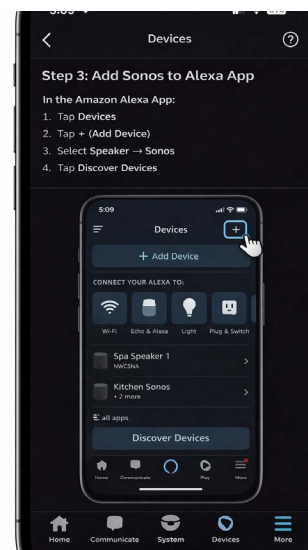
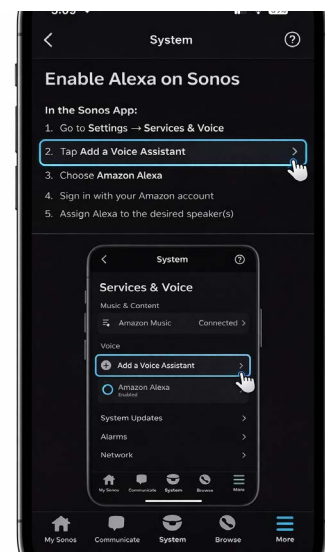
1. Go to Settings → Services & Voice
2. Tap to add a Voice Assistant
3. Choose Amazon Alexa
4. Sign in with your Amazon account
5. Assign Alexa to your speaker(s)

Step 3: Add Sonos to the Alexa App

In the Amazon Alexa app:

1. Tap Devices
2. Tap + (Add Device)
3. Select Speaker → Sonos
4. Tap Discover Devices

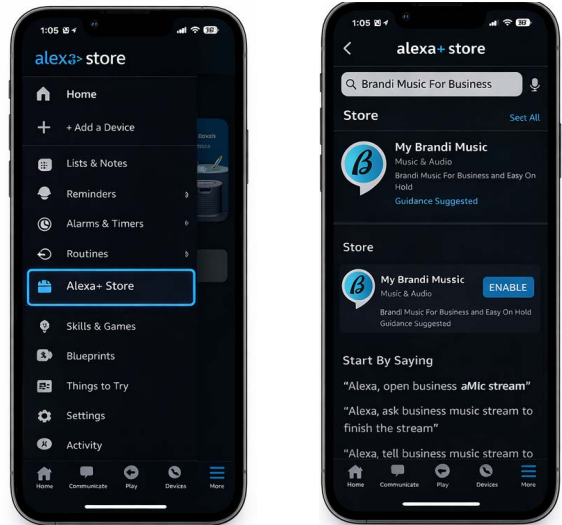
 Your Sonos speakers should now appear



Step 4: Enable the Brandi Music Skill

In the Amazon Alexa app:

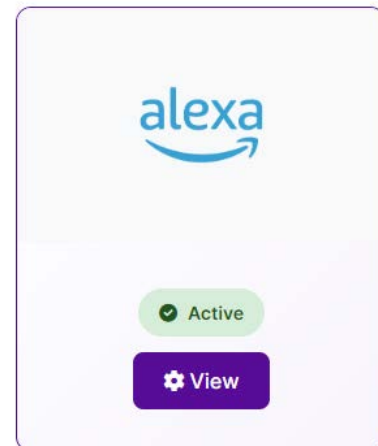
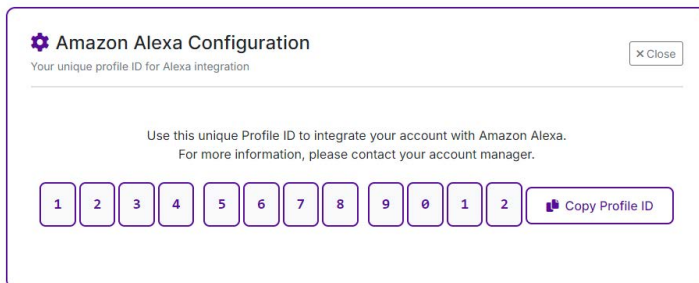
1. Open the Alexa app
2. Tap the menu icon (☰) in the upper-left
3. Tap Alexa+ Store
4. Use the search feature
5. Search for: "Brandi Music For Business"
6. Select the skill
7. Tap Enable or Launch



Step 5: Get Your Brandi Music Profile ID

Before linking your account, retrieve your unique Profile ID:

1. Go to: <https://easynholdcloud.com>
2. Log in and Navigate to: Settings → Products → Integrations
3. Select Amazon Alexa Integration
4. Click View → Copy your Profile ID



Step 6: Link Your Account Using Voice

Use the following voice commands to play your Brandi Music stream on the SONOS speaker.



1. Make sure the microphone is ON (Look for the mic icon light on the speaker)
2. Say: "Alexa, open Brandi Music"
3. Alexa will respond: "It looks like you need to set up your unique ID..."
4. Say: "My unique profile ID is...(Speak your Unique Profile ID clearly, without pausing.)"
5. Alexa will prompt you to ask for a list of your streams, or you can simply say, "Play my stream."

From now on, you can control your music by speaking directly to the Sonos Era 100 while the microphone is enabled.

Set Up a Music Playback Schedule Using the SONOS App

You can automatically start your Brandi Music™ stream at specific times using the Sonos app.

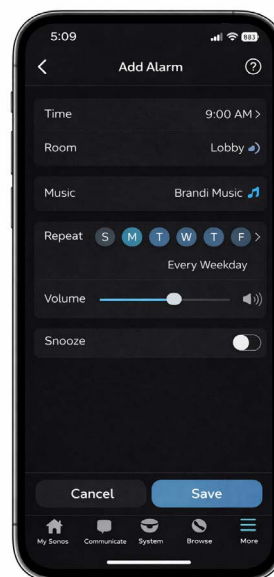
Step 1: Open the SONOS App

1. Go to Settings
2. Tap System
3. Tap Alarms
4. Tap Add Alarm

Step 2: Configure the Schedule

Set the following:

1. Time: (e.g., 9:00 AM)
2. Room: Select your Sonos speaker (e.g., Lobby)
3. Music Source: Choose your Brandi Music stream
4. Volume: Set desired level
5. Repeat: Select days (e.g., Mon–Fri)
6. Tap Save



Be sure your speaker remains powered on and connected to Wi-Fi at all times.

Log in to your account at easynholdcloud.com to build Music Schedules. The music schedules will override your basic (or default) schedule.

See the Brandi video on music programming in Brandi Music: <https://vimeo.com/548432868>



Contact Us: support@easynhold.com | 888-798-4653



SONOS

